

POINT OF VIEW ON LIVING & NATURE

Human beings have a strong connection to nature and the environment. We all have a specific memory of a plant or an environment that we have particularly enjoyed. Such a memory can sometimes be rekindled by a taste, a smell or an image.

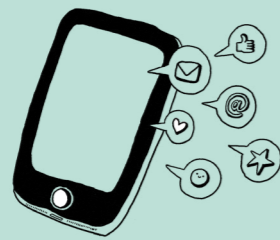
Which image of the exhibition best represents your relationship with nature?



POINT OF VIEW ON DIGITAL & DATA

Since the introduction of digital technologies, behaviour, relationships, interactions, work and communication have changed significantly.

How do you think social networks influence your point of view on others and yourself?



POINT OF VIEW ON HOPE & DIGNITY

Having hope is imagining a future with goals and ambitions. Having dignity is feeling respected and autonomous as a living entity.

What were your hopes for your future when you were younger? What about now?

If you like, you can tell your younger self about all the wonderful things you accomplished when you were growing up. It feels amazing!



POINT OF VIEW ON HOME & SPACES



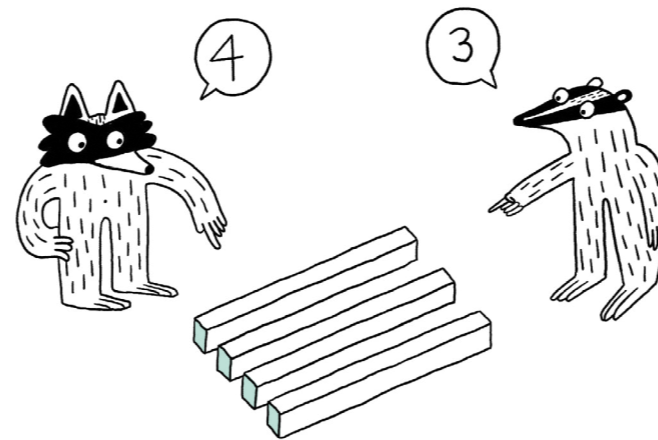
Of all the human emotions we experience, seven emotions that we *all* feel transcend language, regional, cultural and ethnic differences. These are anger, contempt, disgust, enjoyment, fear, sadness and surprise.

Try to associate a colour with each emotion and associate a colour with your favourite photograph in this section.



POINT OF VIEW ON FACTS AND FICTION

Over the past few years, it has become more difficult to distinguish between what is real and what is not. People perceive events differently, while the idea of truth has turned out to be a new battlefield.



Photography is powerful when it comes to illusion; it can also reveal the fine line between reality and fiction in the digital age.

Find Nadine Schlieper and Robert Pufleb's photograph PC-016-170217. What do you think it really represents?



POCKET GUIDE POINTS OF VIEW ON DIALOGUES ON HUMANITY

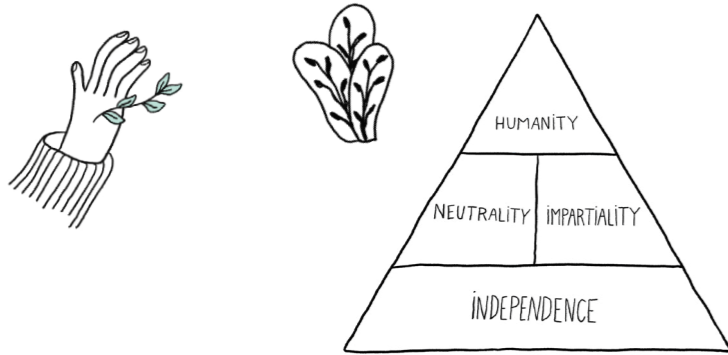


By giving you the impetus to find your point of view, this pocket guide will help you visit the exhibition alone or with family and friends!

POINT OF VIEW

OF HUMANITARIAN PRINCIPLES

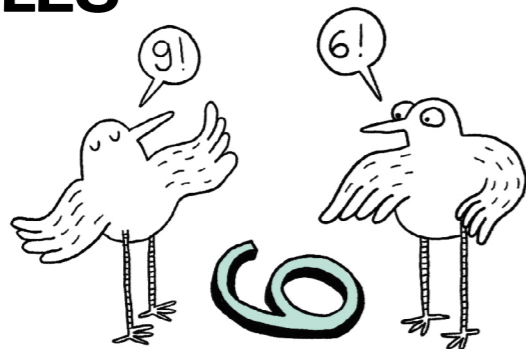
Humanity is the foundation and the aim of the humanitarian principles. Human suffering must be addressed wherever it is found. The purpose of humanitarian action is to protect life and health and ensure respect for human beings.



Humanitarian action must be entirely needs-based and give priority to the most urgent cases of distress without making a distinction between nationality, race, gender, religious belief, class or political opinions.

POINT OF VIEW

OF HUMANITARIAN PRINCIPLES



Who's right here? Both!

Empathy and dignity are at the heart of the humanitarian approach. They respect the fact that we all can have different points of view and hence enable us to learn more from each other.

Sometimes we change our point of view depending on the context, particularly in a crisis.

How can you best understand someone else's point of view?

POINT OF VIEW

OF A PHOTOGRAPHER

In the frame: what falls within the frame and is delimited by the edges of the photograph and visible in the image.

Out-of-frame: what is present in the physical space at the time the photograph was taken but is not shown in the image.



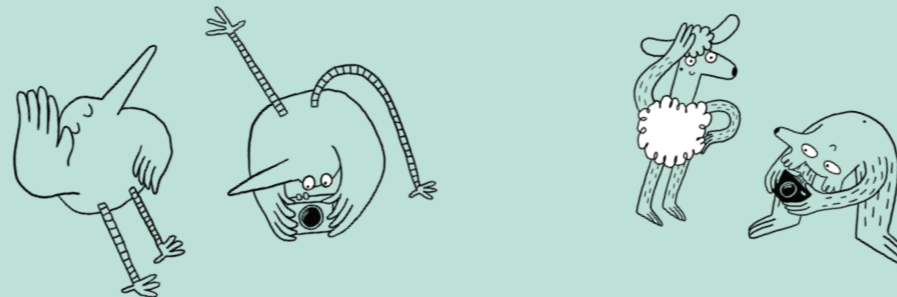
Don't forget that what you see in a photograph is only a tiny part of reality! A photograph can be edited, manipulated or even entirely created by a computer.

Playing with the "out-of-frame" can sometimes give a photograph a real narrative power. Can you imagine what is outside the frame of a photograph in the exhibition?

POINT OF VIEW

OF A PHOTOGRAPHER

A subject can be photographed close-up; from a distance; from the front; or with a low or a high angle shot. The photographers' point of view on their subject will influence the viewers' point of view!



The famous photojournalist Robert Capa once said: "If your picture isn't good enough, it's because you weren't close enough". In photography, proximity to the subject can be understood as physical distance, but also as intimacy.

Look at the photographs from the Red Cross archives in the exhibition. What can you tell about the proximity between photographers and subjects?

POINT OF VIEW

ON AN IMAGE



It is not always easy to articulate one's points of view in an art exhibition. It may be easier if you stop in front of an image of your choice and ask yourself a few questions.

Use the image as a starting point:

What is visible in the image?

How was it created?

Use your impressions as a starting point:

Does the image remind you of something you have already seen or experienced?

Does it evoke any feelings or emotions?

Use the context as a starting point:

Does the image bring to mind current or historical events?

Why do you think it is interesting to exhibit this image here today?



POINT OF VIEW

ON AN IMAGE



Stand in front of your favourite photograph in the exhibition. Do you want to share your point of view? It's easy! Choose at least one word per category to help you:



What is its most distinctive feature?

detail
location
action
colour
light
technique

What does it refer to?

history
society
nature
imagination
current events
individual

What does the photograph look like?

chaotic
sober
balanced
noisy
rhythmic
silent

What is the aim of the photograph?

to amaze
to move
to question
to amuse
to reveal
to explore



Use your chosen words and write a description of the image here:

.....
.....